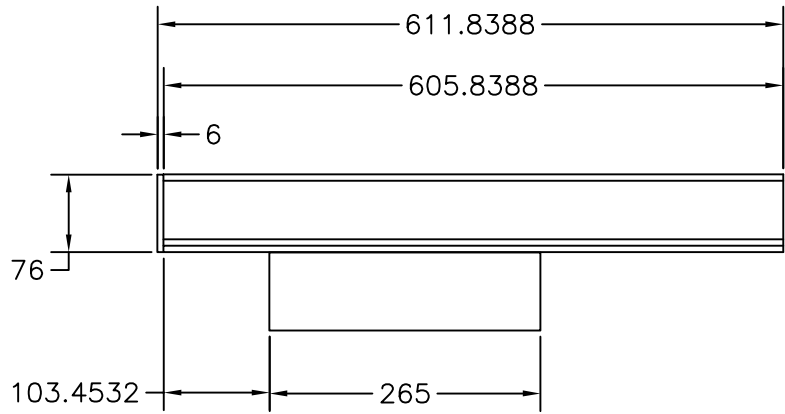
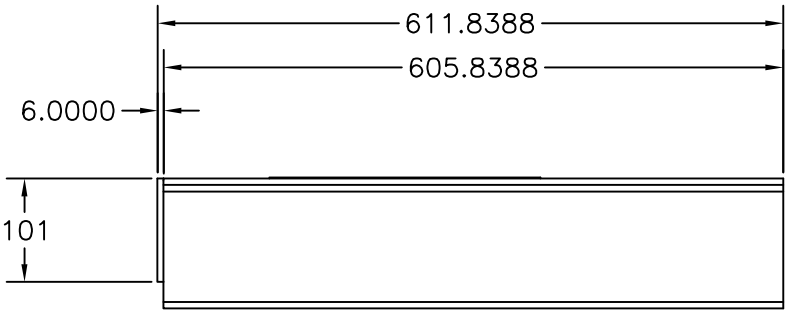


Please update drawing after receipt of LCP drawing from manufacturer

1/4" THK CS PLATE

ANGLE SUPPORT – 5 X 3 X 1/4

Please mention this support will be welded to saddle or bolted. we prefer to bolted. if so, please specify hole dimension and bolt size



- NOTES:
- 1. ALL TAPPED BRANCHES TO INCLUDE TWO (2) GUSSETS LOCATED 90° APART.
 - 2. ALL SUPPORT WELDS SHALL BE CONTINUOUSLY WELDED.
 - 3. MATERIAL TEST REPORTS ARE REQUIRED.
 - 4. ALL MATERIALS USED SHALL BE NEW & UNUSED.
 - 5. ALL DIMENSIONS ARE IN MM.

1	F	28.08.24	FOR APPROVAL	AJD	AJD	IES	SES
0	F	30.07.24	FOR APPROVAL	AJD	AJD	IES	SES
REV.	STATUS	DATE	PURPOSE OF ISSUE	PREP.	CHKD.	APPD.	AUTH.
CLIENT: ENER TECHNOLOGI SERVICE: PROPANE REFRIGERATION PACKAGE LOCATION: IRAQ UNIT TAG NO.: RU-0001 A/B							
VENDOR LOGO							
Contract No.	P.O No.	ENER-MME-2024-100-001			SCALE		
DRAWING TITLE: LOCAL CONTROL STATION RU0001A-LCP-01 SUPPORT							
DRAWING NO. MPE007- JB-SPRT-01				REV.	SHEET No.	SIZE	
				1	1 OF 1	D	